



Cape Eleuthera
Foundation

2019

Annual Report



” ...IT FEELS LIKE OUR ACHIEVEMENTS ARE NOW AT A TIPPING POINT CREATING MOMENTUM TOWARDS A MORE LIVABLE FUTURE FOR OUR NEIGHBORS, OUR HOST NATION AND BEYOND.”

-CHRIS MAXEY

TABLE OF CONTENTS

- 03 Update from the Founders
- 04 Celebrating the Brooks Family
- 06 New Faces on Campus
- 07 Launch of the Deep Creek Primary Lab School
- 09 Updates from Campus - Outreach
- 11 Updates from Campus - Cape Eleuthera Institute
- 13 Updates from Campus - Center for Sustainable Development: Hurricane Relief Efforts
- 15 Announcing The Island School Green Tour
- 16 Financials
- 17 Donor Recognition





Update from the Founders

Dear Supporters,

As we enter our third decade, Pam and I continue to be so proud of how far The Island School has soared. In the same way that our graduates learn to effect positive change during their journey and pay it forward in their life work, so do our successful models in education and sustainability are beginning to effect change far beyond our campus.

As I reflect on the past year, it feels like our achievements on the Cape are now generating momentum for collaboration with our neighbors, our host nation, and beyond. Recently, I signed an agreement with the Minister of Education to launch the Deep Creek Laboratory School and expand the great success of the Deep Creek Middle School to include pre - k through grade 6. Minister Lloyd shares his vision for this partnership that wants to demonstrate a new culture for school throughout The Bahamas.

As a Founding member of the Mastery Transcript Consortium, we continue to be the fast horse in learning how to celebrate the whole student across a full spectrum of skills and habits of mind. Our faculty and students continue to be pioneers along this course that strives to make school more real.

In the early years we were the first to model a renewable energy intertie sharing our solar and wind power with the Bahamas Power and Light grid. Our experience now has us poised to deliver on a utility-scale project that can power most of South Eleuthera and create a significant return on investment over a 25-year period. It is inspiring to imagine that we might use the energy of the sun to provide scholarships at the Deep Creek Lab School.

There is great work ahead and more than ever before we will be leaning on a next generation of leadership. It is our goal to hire a new CEO/Head of School to land at the helm as soon as this Summer. Pam and I will continue to be involved and know that our vision to challenge norms and build new successful models remains a core part of our DNA.

We greatly appreciate the continued passionate interest from so many great families and partner organizations. We wish you all a glorious Holiday Season. Please stay in touch and visit us at the Cape soon.

Respectfully,

Chris and Pam



CELEBRATING THE BROOKS FAMILY

MEGAN GILBERT

In the summer of 2005, Annabelle Brooks arrived at The Island School to be a marine ecology teacher. As one of two SCUBA instructors on staff and dozens of students to certify, Annabelle reached out to Chirs Maxey with the idea that her then-boyfriend came to assist with SCUBA Week. Shortly thereafter, Annabelle and Edd began their 15 year journey with The Island School.



later to forge an extremely successful partnership with Earthwatch in 2014.

In 2007, Edd began baited underwater video surveys (BRUVs), which use underwater cameras and bait to record and study marine life. These surveys came to be the first successful survey of their nature in the Western Hemisphere and became the focus of Edd's PhD. The successful BRUVS surveys also marked the inception of CEI's shark research program.

While the shark program flourished, Annabelle was also busy managing and establishing a fully-funded research program that focused on sea turtles. Annabelle, who also completed her degree in fisheries science, found herself making the same transition into the Cape Eleuthera Institute from her role as a faculty member at The Island School, and became their research manager and the head of The Island School's Applied Scientific Research

As the Cape Eleuthera Institute came into existence in the Spring of 2006, both Edd and Annabelle took on leadership roles in helping to launch this new research facility. Edd was eager to begin studies with sharks and Annabelle focused on studying juvenile green sea turtles,

“THE BROOKS CAN BE CONSIDERED PIONEERS FOR THE HANDFUL OF PROGRAMS THAT THEY ESTABLISHED THROUGHOUT THE ORGANIZATION.”



Department. Under the scope of CEI, Annabelle also managed and developed the intern program, established the lionfish research team, and eventually took the reigns of CEI as the Assistant Director and then Interim Director.

Though the Brooks moved away from their roles as educators with The Island School, they continued to provide educational lessons and experience to young students and scientists through The Island School's applied research classes and CEI's internship program.

The Brooks can be considered pioneers for the handful of programs that they established throughout the organization. Alongside their educational and research triumphs, they also helped to establish the Early Learning Center (ELC) with the addition of their two sons, Nicky and Felix. The ELC was designed to nurture young minds' academic development through a rich, hands-on learning environment. With the foundation of the ELC, The Island

School became a truly holistic educational experience, serving students at every level of their journey, pre-K through PhD.

Edd's successes in establishing, managing and developing teams did not go unnoticed, and he was approached with an offer to step into a larger management role as the Chief Operating Officer for the Cape Eleuthera Island School. Hungry for a new challenge, Edd accepted.

As Edd moved on from his successful research journey, he tackled the tough job of managing the growing CEIS community, first as COO and then as CEO. One of his great legacies is hiring a team of experienced administrators who can now bring more support to the organization.

As Dr. Brooks began his transition into the CEO position, Annabelle was making a professional transition of her own: she was stepping away as CEI's Director to focus on her PhD at the University of Exeter, which included more than six years of her

turtle research. Today, she remains active as an Adjunct Scientist and collaborator with the Institute.

The Brooks family has contributed to the Cape Eleuthera Island School community in countless ways, and their impact on young scientists and community members will not soon be forgotten. Their commitment to this organization, willingness to help, and excitement to participate in knowledge exchange have made them invaluable assets, and they will be missed dearly.

Edd and Annabelle, along with their two sons, Nicky and Felix, are looking forward to exploring more of The Bahamas and the wider Caribbean when they transition away from the Cape Eleuthera Island School community, to which they will remain connected.



NEW FACES on Campus



Catherine Zervos
CHIEF ADMINISTRATIVE OFFICER

Q: How long have you been with CEIS?
A: Eight months (arrived April 1, 2019).

Q: What attracted you to the organization?
A: The opportunity to experience real stretch goals and have a positive impact in my work environment, and also be a part of an organization that teaches real-world life skills.

Q: What has been the best part of working here?
A: Knowing that my efforts are really helping others grow professionally and personally.

Q: What do you like to do in your free time?
A: Swimming (my number one passion...but only in summer!), cycling, reading and teaching First Aid/CPR.

Q: If you were an Island School student, what would you like the most?
A: Swim Track! I want to challenge myself to make the four-mile trek.

Q: If you were on a research team, which would it be?
A: I know that it wouldn't be sharks. Probably turtles.



Kele Issacs
CHIEF FINANCIAL OFFICER

Q: How long have you been with CEIS?
A: Three months

Q: What attracted you to the organization?
A: I was drawn to CEIS by its 20+ year record of accomplishment and morseo by the possibility of what it yet can still achieve. CEIS is home to global thought leaders and has imbued in its DNA, an intellectual curiosity that knows no bounds combined with brash audaciousness. These attributes allows it to test and incubate big ideas that create the future.

Q: What has been your favorite part of working with CEIS?
A: The best part of working here is being part of the village. The strong sense of community between staff members and students cultivates a work environment that is more akin to a family than an office.

Q: What do you like to do in your free time?
A: Spending time with my family is at the top of that list, followed by a day exploring an unpaved road in my 4x4.

Q: What's your favorite meal in the Dining Hall?
A: It has to be corned beef and grits.

Q: If you could be a part of any research team, which would it be?
A: It would be one that researched the economic impact of sustainable living, producing work that attempted to highlight its potential economic gains.





Launch of the Deep Creek Primary Lab School

This Fall semester, we launched a bold new partnership in collaboration with The Ministry of Education to enhance student learning, performance and teacher instruction.

Teams of educators from Cape Eleuthera Island School (CEIS) and the Ministry of Education (MOE) collaborated to build understanding around a shared vision and develop a detailed timeline for specific goals of the Deep Creek Primary Lab School, which will open its doors in Deep Creek, Eleuthera, to educate 48 school students, ages three to twelve.

The purpose of this initiative is to enrich the national standard of education throughout The Bahamas through the implementation of evidence-based best practices in curriculum design, instruction, and assessment within a place-based educational model. The expectation is that the model is transferrable and will be successful in other schools. We believe this will set a precedent for additional schools to transition into place-based, experiential education utilizing high-impact strategies in alignment with the Bahamian national curriculum.

In addition we have launched a partnership with The University of The Bahamas for student teachers to complete their ten-week teaching practicum at either Deep Creek Middle School (DCMS) or Deep Creek Primary Lab School. This term we had two student teachers join us at the primary school and one student teacher at DCMS. All three teachers recently completed their teaching practicums to graduate from their degree programs, and will be joining us as full-time contracted employees within the CEIS family in the New Year.

GOALS FOR THE DEEP CREEK PRIMARY LAB SCHOOL (DCPLS) INCLUDE:

- » Administer universal screening assessments and utilize the data to identify trends and specific strengths and areas of need, as well as to monitor student progress.
- » Implement a multi-tiered system of support to provide supplementary, intensive instruction to students with deficits in reading and/or mathematics.
- » Implement an Instructional Coaching model, in which an experienced educator serves as a resource to support teachers through providing personalized professional development, job coaching, and observation and feedback, as well as modeling lessons and co-teaching.
- » Establish Professional Learning Communities (PLC) for teachers as a form of collaborative learning and continual professional growth.
- » Incorporate place-based educational activities into instruction, facilitated by Cape Eleuthera Island School educators in collaboration with Deep Creek Primary School educators.



THE EXPECTATION IS THAT THE MODEL IS TRANSFERRABLE AND WILL BE SUCCESSFUL IN OTHER SCHOOLS."





UPDATES FROM CAMPUS OUTREACH

CANDICE BRITTAN, DIRECTOR OF OUTREACH AND PARTNERSHIPS

The Cape Eleuthera Island School's Outreach mission is to foster meaningful relationships through education, conservation and sustainability to advocate living well in a place. We collaborate with local schools, youth, families, community leaders and local partners to design and implement community outreach programs that have been requested.

OUR 2019 PROGRAMS

Buddy Reading Program

- Throughout the semester, Island School students have read weekly with their Primary School buddies to support reading growth for children in South Eleuthera

Young Men's Leadership Program

- Through this program young men in South Eleuthera are supported to become leaders in their communities by building grit, determination, self-awareness, leadership and conflict resolution skills.

After Schools Programs

- Open Learning Center
- Community Garden
- Sports
- Swim Club
- Plastics Club

South Eleuthera Kids Camp

- A week long overnight camp for students from settlements across South Eleuthera that provides an opportunity to learn about the environment and explore the island through engaging hands on lessons and experiential education



Coral Camp

- Coral Camp is an opportunity for local students to increase their knowledge of coral reefs, the threats they face and various restoration efforts. In addition, these camps help create opportunities for students to create art for advocacy to communicate the importance of coral reefs in The Bahamas

Apprentice Program

- With the goal to empower young people to pursue an area of interest for potential employment, the Apprentice Program allows young adults to work closely with CEIS staff to gain work experience and professional development.

BESS Program

- A unique opportunity for graduating students in The Bahamas who have a keen interest in the environment and want to learn more as they transition from high school to university studies. Students participate in a semester at The Island School and a four-month paid internship at an environmental conservation-related organization.

Local Schools Program

- Facilitates field-trips for school children on Eleuthera and creates opportunities for Bahamian children to experience environmental stewardship. We develop applied educational resources that are locally relevant and align with the Bahamian National Science Curriculum for primary and secondary schools.

NUMBERS AT A GLANCE

6 YOUNG ADULTS COMPLETED THE APPRENTICE PROGRAM

SUMMER CAMP EXPERIENCES

SOUTH ELEUTHERA KIDS CAMP

14 CHILDREN

CORAL CAMP

31 STUDENTS

44 PRIMARY SCHOOL CHILDREN CONSISTENTLY SUPPORTED WITH AFTER SCHOOLS PROGRAMS **5 DAYS PER WEEK**

36 IS STUDENTS SUPPORTED THE AFTER SCHOOLS PROGRAM AS PART OF THEIR SERVICE JOURNEY



8 IS STUDENTS SUPPORTED BUDDY-READING AT DEEP CREEK PRIMARY FOR **36 PRIMARY SCHOOL STUDENTS**

34 TEACHERS WERE PROVIDED 2-DAYS OF PROFESSIONAL DEVELOPMENT IN SOUTH ELEUTHERA FOCUSED ON SUPPORTING LITERACY GROWTH FOR PRIMARY SCHOOL AGED CHILDREN

LOCAL SCHOOLS PROGRAM REACHED **223** CHILDREN



YOUNG MEN'S LEADERSHIP PROGRAM SUPPORTED **13 BOYS**

19 HIGH SCHOOL STUDENTS COMPLETED WORK EXPERIENCE AT CEIS

BESS STUDENTS

UPDATES FROM CAMPUS

Cape Eleuthera Institute

DR NICHOLAS HIGGS, DIRECTOR OF THE CAPE ELEUTHERA INSTITUTE



As the new Director of the Cape Eleuthera Institute, I am proud to share some exciting projects and partnerships that are taking off at CEI. In particular, I'd like to highlight two areas of success here, which exemplify our mission to combine excellent science with education and outreach.

BAHAMAS CORAL INNOVATION HUB

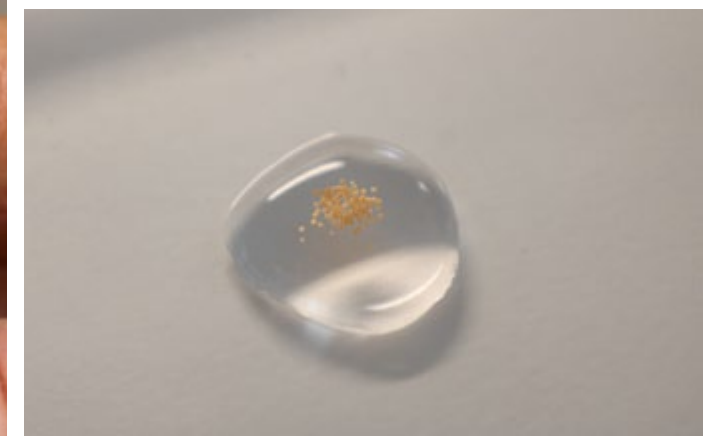
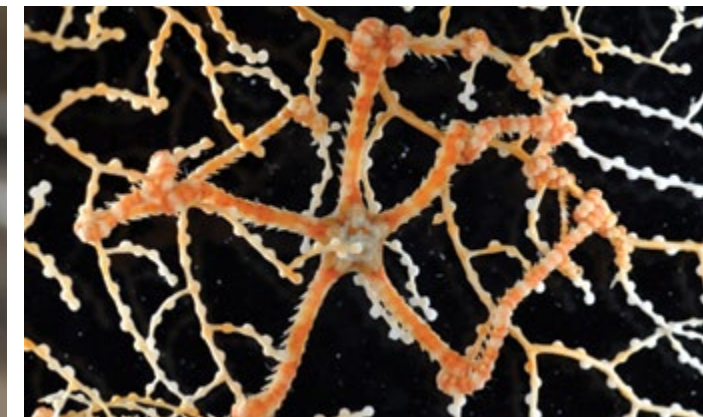
The Bahamas Coral Innovation Hub is a partnership between CEI, The Perry Institute for Marine Science and The Nature Conservancy that is pioneering new techniques for restoring coral reef ecosystems. At CEI, researchers have also successfully carried out a full cycle of coral seeding by collecting the coral spawn (gametes) in the wild, growing them up in the lab and then planting them back out on local reefs to monitor their growth.

A significant part of the Coral Innovation Hub project is also dedicated to the other key elements of CEI's mission: education and outreach. In September, aquarists from around the world came to Eleuthera to learn and practice coral restoration techniques from our experts and partners. This summer our coral researchers teamed up with the Island School Outreach team to run a Coral Camp for children in north Eleuthera. This work has been greatly supported by our Nature Conservancy partners and we are looking to expand this work together in the future.



DEEP-WATER PROGRAMS

This year, our deep-water programs have completed two more expeditions with the OceanX foundation by exploring deep-sea ecosystems in the Exuma Sound onboard the research ship Alucia. These missions culminated in the successful tagging of a six-gill shark from one of the deep-sea submersibles; the first time that anyone has ever managed such a technically challenging feat. The shark conservation team also led a group of scientists onboard the Alucia to document an oceanic white-tip shark nursery near Haiti. In parallel to this work, Dr. Nathan Robinson, was in the Gulf of Mexico over the summer working with a long-time collaborator of CEI, Dr. Edith Widder, studying deep pelagic ecosystems. That team captured video footage of a live giant-squid for only the second time in history and the first time outside the Pacific!



UPDATES FROM CAMPUS

Center for Sustainable Development: HURRICANE RELIEF EFFORTS

MIKE CORTINA, DIRECTOR OF CENTER FOR SUSTAINABLE DEVELOPMENT



“ THAT IMMEDIATE RESPONSE HAS LED TO CONTINUED INTEREST FROM HOMEOWNERS IN ABACO DESIRING A LONG-TERM, INEXPENSIVE, AND FOSSIL-FUEL FREE SOLUTION TO THE POWER OUTAGE PLAGUING THE ISLAND. ”



In late August, The Island School Hurricane Team watched with uneasy anticipation as Hurricane Dorian passed to the east, and then to the north of Eleuthera, sparing us once again the devastation of another nightmarish hurricane season. Our neighbors to the north were not as lucky, as Abaco was subjected to 185 mph winds making up the worst hurricane in modern history. Dorian brought forth memories of Ragged Island, devastated by Hurricane Irma in 2017, which reduced homes to rubble, and completely destroyed the power grid, leaving residents homeless and without electricity and water. In 2017 and 2018, The Island School and the Center for Sustainable Development assisted the Prime Minister's Ragged Island rebuilding committee envision a

newer, more resilient Ragged Island. It came as no surprise that we were once again called upon in the wake of Dorian, to help bring power to those in need. The Island School, together with several non-profit organizations successfully delivered three off-grid solar power kits on loan from Tesla, to several disaster relief organizations in Abaco and the Abaco Cays.

Generous Island School supporters also supported our own response effort, compiling small solar kits to help provide immediate power to command centers to charge phones, radios, computers and power tools. By the end of the year, several of these kits will be in Great Guana Cay, one of the hardest hit islands that is still without power.

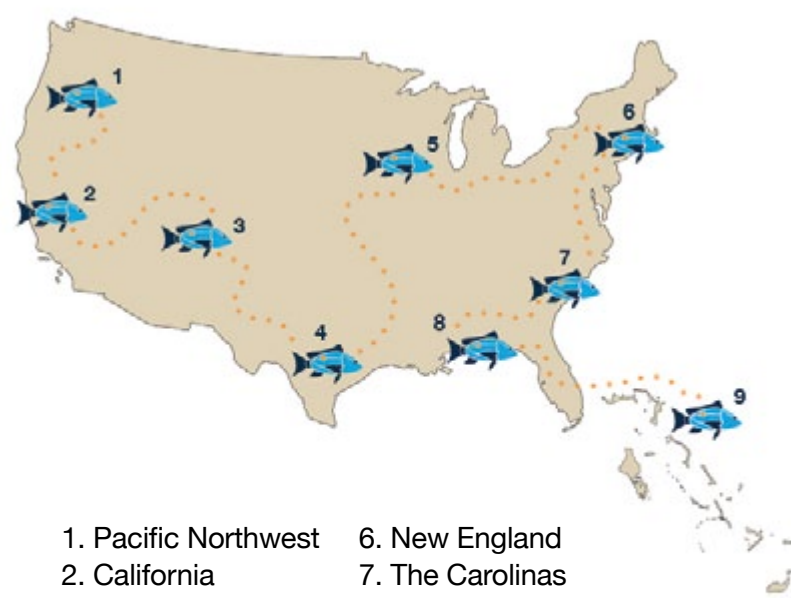
That immediate response has led to continued interest from homeowners in Abaco desiring a long-term, inexpensive, and fossil-fuel free solution to the power outage plaguing the island. As a result, CSD is working with several homeowners to develop off-grid solar photovoltaic energy solutions for their homes. We are thrilled to be able to use our experience with solar PV to help those in need in the wake of Hurricane Dorian. While the homeowner's present motive to incorporate solar is undesirable, the opportunity demonstrates the benefits of distributed renewable energy systems, especially in hurricane susceptible islands in the Caribbean.



Announcing THE ISLAND SCHOOL GREEN TOUR

At The Island School, sustainability is an institutional keystone. Students learn that true sustainability begins with individual lifestyles and requires a commitment from every member of the community to embrace the challenge of personal change. It requires every person to live out the principles of sustainability on environmental, social, and economic levels. This is the sustainability we teach at The Island School.

While our green campus allows students, educators, and scientists to live what we teach, we understand that this collective endeavor to practicing sustainability as an organization must also include our admissions efforts. As a way to reduce carbon emissions, our team is proud to announce that we will be launching a Green Admissions Tour. This year, we will be “traveling” around the country, providing virtual presentations and receptions to interested families. Please take a look at the map and details below to see when we may be “visiting” a city near you!



- | | |
|----------------------|------------------|
| 1. Pacific Northwest | 6. New England |
| 2. California | 7. The Carolinas |
| 3. Four Corner | 8. Gulf Coast |
| 4. Lonestar State | 9. The Bahamas |
| 5. Midwest | |

FISCAL YEAR 2019 FINANCIALS

Cape Eleuthera Foundation, Inc. | Statement of Activities

	For the year ended June 30th:	
	2019	2018
Revenue, Gains, and Other Support:		
Contributions	3,232,794	4,730,712
Investment Income	125,477	360,408
Other Income		-
Realized & Unrealized Gains & (Losses)	274,453	253,235
Total revenue and other support	3,632,724	5,344,355
Expenses:		
Program Services	1,555,572	2,656,012
Supporting Services	361,129	374,248
Fundraising	323,441	335,190
Total expenses	2,240,142	3,365,450
Increase In Net Assets	1,392,582	1,978,905
Net Assets, Beginning	14,310,876	12,331,971
Net Assets, Ending	15,703,458	14,310,876

RECOGNITION OF SUPPORTERS

Fiscal Year 2019

We are deeply grateful to our donors and their commitment to the Cape Eleuthera Foundation and our mission. Through their generosity, our dedication to positively effect change continues.

These are all donations made from starting July 1, 2018 through November 30, 2019.

BLUE WHALE

\$100,000 and above

Ed Anderson & Linda Cabot
Dick & Betsy DeVos
Stan & Fiona Druckenmiller
Charles & Reva Murphy
Mr. & Mrs. Richard C. Patton
Mrs. William L. Searle
Mark & Tricia Vanacore
David & Beverly Verdier

WHALE SHARK

\$50,000 to \$99,999

Greg & Elizabeth Allen
Daniel & Pamela DeVos
Francesca Forrestal
The Ingrassia Family
Leon Levy Foundation
Meyerson Family Foundations
Mr. & Mrs. William A. Muggia
Michael Pausic & Kelley MacDougall
RBC Trade for Kids
Alexander Roepers
Marion S. Searle
David Singer & Diana Kapp
Edward Stern & Stephanie Rein
Tom & Mila Tuttle
Bob VanderWeide & Shelby Norwich
G. Unger Vetlesen Foundation

BULL SHARK

\$25,000 to \$49,999

Anonymous (3)
The Bitzer Family
Bill & Kara Bohnsack
The Brown Foundation, Inc.
Sean & Sarah Farrington
The Forman Family Foundation
The Gildea Foundation
Bobbie Hallig
Kennet & Alice Kendall
Sarah Ketterer
Mr. & Mrs. S. Gunnar Klarr
Bahamas Charitable Giving Foundation
Mr. & Mrs. James F Lavelle
Mark & Virginia McBride
David McCormick

Friedrike Merck
Save Our Seas Foundation
Robin & Brent Symonette
Floyd & Kim Wilson
Juan Zhao

SEA TURTLE

\$10,000 to \$24,999

Anonymous (2)
James & Joyce Andersen
Peter Andrews & Vicky Knowles
James & Kristen Atwood
Ian Turpin & Luci Baines Johnson
David & Lucy Ball
David & Joanna Beitel
Marie-Claire & James Brittain
John Fisher & Jennifer Caldwell
The Carroll Family
Christopher & Theresa Cook
Cotton Bay Foundation
Jon Cummings & Holly Hegener
Marie Fauth Charitable Fund
Jim & Alison Derrick
Dalton DeVos
The Reilly-Dickey Family
The Easton Family
Graham Goldsmith & Barbara Straut
Gerald & Helen Halpin
The HBE Foundation
Ted & Bonnie Henderson
Leith Barry
John & Arlene Howard
Andrew & Cheryl Huffman
John & Janice Jester
Northrup & Victoria Knox
Dr. Adam Koppel & Dr. Brenda Haynes
Seth & Cynthia Lawry
Larry & Vicky Lunt
Clarke & Betsy Moody
The Moore Charitable Foundation
Leslie Morris
The Nonnenmacher Family
Annie Obrecht
Cecilia & Hap Perry
Mimi Picotte
Dwight & Kirsten Poler
Jennifer Eplett Reilly & Sean E. Reilly
Jordan & Micaela Richtsmeier
John & Lizzie Robertshaw

Steve Della Rocca & Courtenay Hardy
Daniel Rosenbaum
Bijan & Lauren Sabet
Mrs. Elizabeth B. Searle & Family
Jake Searle
The Shum Family
Christopher & Laura Towle
Porter Trimble
Jerry & Marcia Tubergen
Ben VanderWeide
The Vetter Family
John & Randi Willoch
Windermere Island Foundation

QUEEN CONCH

\$5,000 to \$9,999

Anonymous
The Ambrecht Family
Gigi Andersen
Kenneth & Blair Beall
Richard Berk & Susan Sorenson
The Borghese Family
Kevin & Julie Callaghan
Lawrence & Deborah Catena
Jim & Cynthia Chaston
Mark & Lisa Cirilli
Clark Construction Group, LLC.
Christine & Bob Crenshaw
Robin D'Alessandro & Noel Philp
Carmel Delaney
Dale Dellacqua
Hannah Druckenmiller
Mr. & Mrs. Edward W. Easton
Varick & Alane Foster
Lizanne Galbreath
Suzanne & Konrad Gesner
Scott, Stephanie & Drew Ginsberg
Jim & Gigi Goldman
Mark & Lara Heimann
Una C. Jackman
The LBJ Family Foundation
Jane Kinney
Mr. & Mrs. Scott Kirkpatrick
Sue & Chris Klem
The Laboiteaux Family Foundation
John G. LaRussa
Bassem Mansour
Tom & Anne Maxey
John Megrue

The Merison Family
Andrea Mueller & Ephi Eyal
The Nature Conservancy
Shelby Norwich
The Peterson Family Fund
Pritzker Pucker Family Foundation
Patrick Sands
Lucy Scott
Michael & Denise Sharp
John Shrewsbury & Erecia Miller
Siegert Family Fund of the
Minneapolis Foundation
The Swett Family
Tito's Handmade Vodka
Mackey Violich
Mark & Jill Wehrly
Robert & Tona White
James Young
John & Marcia Zweig

NASSAU GROUPE

\$2,500 to \$4,999

Anonymous
J.David Andrews
David & Susan Cabot
The Cerf Family
Valery E. Craane
John & Tanya Crone
The Croom Family
The Dayton Family
Jeffrey & Abigail Diggins
Jill Eisenstadt & Michael Drinkard
The Clarence & Anne Dillon
Dunwalke Trust
Carrie & Kinsey Dyckman
Carolyn Ferraby
Ben Freeman
Alexander & Emily Friend
JC Giordano & Errol Train
Todd Gowdy
Bill & Leita Hamill
Eric Hoffman
The Holland Family
James Kelley
John Kevin & Mary Jane Namian
Latham & Watkins LLP
The Marran Family
The Martens Family
The Misoul Family
Michael Movsovic
Stephen & Sarah Murray
Andrew Nipon & Nancy Easton
Ernie Parizeau
Perpetual Asset Management
Overseas Ltd.
Yolanda Wu & Neil Platt
Michael Sibley
Michael Sim
The Thayer-McGivern Family
Davison R. & Frances D. Thompson

MUTTON SNAPPER

\$1,000 to \$2,499

Anonymous (2)
The Bankowski Family
Mary Kate & David Barnes
Daniel & Andrea Benetti
Catherine Biddle
Harold Birnbaum, John Amorosi, &
the Davis Polk Partnership
Bill & Catherine Bradford
Steven & Julia Braithwaite
Meg Bunn
Perry & Darby Buroker
Juliana & Douglas Carlucci
Bob & Krissy Clutterbuck
Nancie H. Cooper
Helen Blair Day
Nick Del Vecchio
Stephen & Dana DiPrima
The Dretler Family
Samy Elkaslasy
The Engebretson Family
Patrik Engstrom
Drew Fink & Daniela Uribe
Guy Forman
Luke & Rhonda Fowler
The Friedland Family
Samuel Fromkin
The Frost Family
Erwin & Katherine Geis
Scholarship Fund
George Giannos
Scott Gorsline
Duane & Julie Harshorn
Mark & Anne Hatch
The Healy Family
Bob & Ross Henderson
John & Laura Herrick
Rebecca & Edward Hinds Jr.
Dave Hokin
Elizabeth Horvitz
Patrick Howard
The Hoyt Family
Whitney W. & Clarke F.G. Jones
The Jones Family
Barbara Jordan
Tatiana Kamarskaya
John & Hilary Keene
Roland & Marilyn Labonte
William Ledingham
Alvin & Susan Levin
Jane C MacElree Family Foundation
Chris & Pam Maxey
The McDermott Family
Miles & Pat McDonald
Sean G. McGould
Jackson Family Donor Advised Fund
Shepherd P. Murray
The Neuman Family
The Weisel Family
Alexandra Penny
William & Sandra Powel

John J. Prior
J. S. Reynertson
The Richmond Family
The Rohrer Family
Brice Russian
The Scott Family
Cassandra Siegel Neubauer
Jessica & Powell Spears
Amy & Albert Springs
Rick Stoddard
The Strom Family
The Sulger Family
Cari Switzer
Dudley & Michelle Taft
The Thorson Family
Luke & Diandra Tubergen
Mike & Susan Valaik
Rob Van Alen
The Vitaz Family
Aaron & Sherry Wangenheim
John & Paul Warn
Marjorie King & Peter Wellin
Bruce R. Zetter
Zoo Miami Foundation

SEA FANS

Under \$1,000

Claire Ackers
Ned Adriance
M. Tundi Agardy
Kira Akka-Seidel
Scott Aland
Matthew Ale
Joseph Aleardi
Emma F. Alexander
Barbara Alexander
Charles Alexander
Michael T. Alic
Jennifer (Martin) Allan
Hilary W. Allinson
Elizabeth Ambargis
Andrew Thaler
Todd D. Andrews
Deborah Appiarus
Kathryn Arffa
Mike Argo
Christopher Argyrople
The Arigo Family
Matthew Arigo
Mary Assini
Donna Atwell
Jeffrey Atwood
R. G. Averitt III
Dawn Averitt
Jill Averitt
Amanda A Azkoul
John Azubuike
Ben Bailey III
Sarah Bailey
Elizabeth Baker
Julia Baker
Brian Baker
Erin Baker
Julia Bakutis

The Balderson Family
Thomas Bales
Kaitlin Ball
Susan V Balloch
Meg Barnes
Kevin M. Barry, Jr.
Randall Bassett
Debbie & Bill Battjes
Jaclyn Battjes
Pamela R Baugh
Jessica Baylor
The Bebergal Family
Paul A. & Holly Burks Becker
Elizabeth Becker
Hilary Becker
Emma Beecher
Makenna Beers
Nicolas Benitz
Beth E. Bernett
Hailey Bernstein
Nikhil J. Bhat
Dana Biddle
Sandy & Doc Bisset & Family
David Blake
Maggie Bland
Brett Moody Bodnar
Marcella Boelhouwer
Mary Clare Bohnett
Greta Bossenbroek
Jill Boudreau & Howard Present
Kirk Bouffard
Tom & Tina Bourdeaux
Helen Bourdeaux
Sharon Y. Bowen
Amanda & Ken Bowers
Alysia Boyce
Nancy Braun
Robert J. Bray
Anna P. Britain
Corey Broderick
Hayley Brown
Jacob Brown
Audrey C. Brown
Megan Browning
Richard A. Bruno
Hillary Bunn
Josiah Bunting
Stephen Burnham
Benjamin P. Buroker
Lynne Byrne
James Byun
Robert & Jane Cabes
Liza Calkins
Emily Henkes Callahan
Gabriela Canosa
Theresa Canosa
Martina Cappellano
Sophie Cappello
Kate Gibson Carey
Charles Carey
Stephen Cargill
Liam Carroll
Philip Carson
Chris Carson
Annalisa Carson

Molly L. Carter
Angela Cassidy
Alexander Cates
Ronnie & Vicky Cauthen
Jonathan Cerf
Warren B. Cerf
Aiko Chamby
Soren Barclay
Stephanie J. Chaston
Scott Chaston
Ronald & Susan Chernow
Lucas Cherrington
Caitlin Gerrity Chicu
Sheryl Christoffersen
Jeremy Church
Margaret Cissel
Tracy Clement
Rachael Clement
Sheena Cline
Courtney Close
Donald & Sandra Cochran
Jacqueline Codair
Maya Colantuono
Philip Cole
Mr. & Mrs. Wylie Collins
Jared & Laura Collins
Kelli A. Collins
Anne S. Conder
Mark Connelly
Kathleen Connorton
Ed & Kathy Conroy
Jennifer L. Cook
The Cooper Family
Noelle Cooper
Mike Cortina
Chandler Couch
Colton Coughlin
Carole & Phil Coviello
Doug Cowart
Sam Cowles
Molly Rogers Cramer
Mr. & Mrs. James C. Crosland
Margaret S Crosland
Mr. & Mrs. Dennis Crumbine
Laura C. Crume
Brenda Cudney
Josephine Cummings
Diane & Ed Curland
James Curland
Grace Curley
Caroline Currie
Gretchen Goodrich Curtis
Kevin & Meg Cusack
Leslie B. Cutler
Alafair F. Cutler
Nicholas G. Damianos
Matthew Danhof
Kirsten Dargis
Kirk & Peggy Davenport
Elizabeth Davenport
Anne Davis
Abram Dawson
Anna & Michael de Cordova
Alex DeBlois
Sara C. DeBoer & Karl Swedberg

Katie Delaney
Kaila Demaria
Katherine B. Dembergh
Elizabeth DeMello
Grace Dennis
Steven DePaul
Rosamond DePaul
Christine DeTardo
The deTuro Family
Carol Dewing
The Di Egidio family
Richard DiBianca
Pamela Dickinson
Christine Dillon
Patrick DiLoreto
John DiLoreto
John S. Divine
Amy Van Dommelen
Judith & Kevin Donnelly
Stephen E. Doten
Madeline E. Doten
Douggie Douglass
Miles Douglass
Cameron Dowd
Robert W Downes
Leah Downey
Mr. & Mrs. Justin Drazin
Bradford Driscoll
Flora Drury
Matthew Dubbioso
Sean Dunbar
Alicia & Ken Duncan
Chris Durbin
Harriet Durkes
Emily Dyckman
William G. Dyckman
Sylvia Earle
Alessandra Echeverria
Hadley Edie
Melinda Edie
Toni Egger & Robert Taylor
Laura Elko
Kirkland & Ellis LLP
Catherine Ellison
Dave & Helen Emmons
Nicholas Emmons
Nicholas Engebretson
Oliver Engebretson
Anna S. Engst
Jane G. Enterline
Gary & Jeralyn Epstein
Bridget Ercole
Alison A. Ercole
Joan Erickson
Bruce I. Ettelson
Alec E. Faggen
Christopher Fanjul
Cameron Farr
Chloe Farrell
Joan & Joseph Farrell
Lauren Fasolo
James Felderman
Elizabeth Felderman
Santiago Fernandez
JP Ferro

Nicole Firing
Nina Fisher
Katherine Forrestal
Mary Foss-Skiftesvik
The Hottle Family Foundation
Phil & Carolyn Francisco
Hayley Frank
Amanda Frew
Charles Friedman
Jeannette A. Furlong
Lindsey Gael
Ian Gamble
Jose E. Garcia
Bella Garfield
Katherine Garratt
Mary Garvey
Mary George
Henry Gerrity
Remington Gerst
Madison Gesner
Dennis & Marilyn Giannos
Anne Gibbons
Kathleen Hudson Giese
Caroline Giguere
Sandy & Steven Giusti
Harvey Gold
Sivan Goldberg
Peter J. & Patricia A. Gordon
Andrew T Gough
Patricia Gould
Hadley Gouldman
Alison & David Graham
Deanna Green
Ted Griffith
Kenyon B Grogan
Tim Gronet
Natalie Grune
Monique Guimond
Tad W. Guleserian
Ava Guleserian
Dean Gurganis
Anonymous
Victoria A. Hackett
Nicholas Bower
The Hagerty Family
Diane Hailey & Ross Brown
Kyra Hall
Oskar Hallig
Linda K. Hamann
Renee Hamilton
Kevin Cotter & Susan Hanifin
The Hardy Family
Ryan C. Hardy
Keenan Harn
Tammy Harris
Beth Harrison
Theodore Harrison
Glenn Hartman-Mattson
Julia Harwood
Philip & Kerry Haselton
Yeheskel Hasenfeld
Whitney & Elizabeth Hatch
Henry Hatch
Jennifer Hatfield
Anthony Hawgood

Nanette Hayre
Eliza Hazen
Madie Ivy Head
Chuck Head
Jane & Bart Henderson & Family
The Hensler Family
Taylor Herrick
Jayden Heyer
The Highman Family
Tracy Hightower
Austin Hill-Kleespie
Rachel Hines & Michael Cembalest
Candice & Will Hipp
Frank & Darla Hoagland
David Hoffman
Heather B. Hoffman
Taylor Hoffman
Jeff Hoisington
Kimberly Hokin
William & Karen Holland
Courtney S. Hollander
Jessica Holtz
Benjamin Hone
Matthieu Hoopes
Skyler Hopkins
Colin Horgan
Isabella Horstmann
Melissa J. House
Kip & Sara Howard
Kathryn Hoyt
Martha & Marshall Huggins
Susan Hulst
Griffin Hunt
Samantha Hunt
James Iferenta
Peter M. Igoe III
Henry M. Ingram Jr
Olivia & Jack Downing
Azam Janmohamed
Barbara E. Janulis
Ellin Jarmel
Maggie R. Jensen
Monique Johnson
Karen Kachadoorian
Christopher Kachadoorian
Maureen & Ronald Kane
Emmett de Kanter
Mary Jo Kaplan
Kasson Jewelers Inc.
Janet Kastrud
Jessica Kaull
Camila M. Kaune
Chris Keally
Dominique Keefe
Quinn Keefe
Lori Keefe
Brittany Keefe
Alexander Keefe
Nicholas Keeney
James C. Kempner II
Oliver Kendall
The James & Amanda Kennedy Family
Jennifer Kennedy
Sophie E. Kennedy
Holly Kennedy Romano

Robert E. Kenney
Brian Kiley
Andrew Kimball & Sarah Williams
AnnaRose King
Samuel C. King, Jr.
Will Kister
Sarah Kistner
Richard Kite
Denise Klein
Alexander Kleinschmidt
Peter M. Kloak
Dustin Kloempken
Shirley Knight
Courtney & Charlie Knights
Hanna Koch
Sarah Kollar
Jonathan Komisar
Katherine Kosoff
Cynthia Koury
Michael Kratz
Bert & Sylvia Krista
Hanna Kruckman
Thomas Kuck
Nina Kumar
Jay D L'Archevesque
Jennifer Lagor
Samuel Lagor
Taylor Lalemand
Caitlin Townsend Lamb
Ralph & Susan LaPorte
Randall Larrimore & Cathy Cutright
Martine Lavelle
Andrew & Melissa Lawson
Molly Lawson Barrett
Antonia Pryor Leavitt
Greg Ledingham
Brian S. Lee
Juliette Lee
Ann Lenane
Jon & Janet Leonard
Mr. & Mrs. George Lesenskyj
Gerald Leverich
Robert Levine
William Levine
Joshua Lichtman
The Lior Family
Debra Lipsett
Molly G. Lloyd
Christopher Lloyd
Matthew E. Long
Patrick Long
Julie Lord
Julianna Lord
Jensen Lowe
Kyle H. Lubitz
Catherine G. Lucas
David S. Lundeen
The Lyons Family
Michael & Carol MacDonald
Renee Mack
Jennifer Macmillen
Evan Magruder
Mr. & Mrs. Christopher Mahaney
Kelsey Mahony
Marcela Maldonado

Julia Malone
Marie A. Maloney
Richard Mancill
Simon Mann-Gow
Graham C. Manning
Claire Mansour
Kendra Margulies
Marketing Management Services, Inc
Kate Maroni
Elodie Rose Marran
Susan Lintern
Alden & Laurey Mauck
Andrew Mauck
Brittney Maxey
William C. McCalpin
Matthew W. McCalpin
Nancy McCormick
Zindzi McCormick
Patrick McCullough
Alice McCurdy
Cristin McDermott
Trip McDermott
Brendan McDonnell
Thomas M McDonough
Carter McDowell
Bronte McGarrah
Lisa G. McGill
Annie McGill
Sarah McGinley-Smith
Rachel McGinn
Meghan McGowan
Molly R. McKay
Llewellyn Lane Mckee
Maria & Michael DiBianca
Maria McKelvey
Lilly McKenna
Laura McLaughlin
Keenan McMorrow
Alexander McNaughton
Brett McQuaide
Lara & Michael Meggitt
Christopher Megrue
Peter J. Meijer
Andrew Melby
Michael Kochman & Mary Melton
Lindsay M. Melzig
Dr. John Merola & Jodi Butler
Cole Meyerhoff
Anonymous
Laura A. Meyerson
William B. Millard
Ereca Miller
David Miller
Grace G. Miller
Lilly R. Miller
Michael R Mirabito
Mish Tworkowski & Joseph Singer
Wes Mize
Cameron Powel Mize
Robyn & Paul Monger
Kelsey Moody
Brookes Moody
Eric S. Moore
Randy Morgan
Catharyn Morris

Victoria Morrow
Oliver Moss
Abigail Frances Mottur
Simon Mraz
Caroline Muggia
Chadd A. Mukete
Michael A. Mule
Mark Mullins
Glendaly Munoz Chukwuma
Emma Murphy
Tyler Murphy
Marjorie T. Nachman
Stuart Naeny
Molly Nash
Dale R .Naylor
Robert C. Neely
James Neely
Jennifer Nelson
Laura Nelson
Network for Good
Alison D. Neumann
Rebkah Klarr Nevins
Anne Newburg
Bob & Helene Newman
Kathleen Nichols
Maggie Nichols
Katherine Nix
Robin & Cyrus Noble
Janesta Noland
Max Nonnenmacher
Zoe Norcross
John Norfleet
Christopher Norris
Wesley Norton
Elizabeth B. Novak
Thomas Nugent
William C. Nystrom
Madeleine Nystrom
Rory O'Connor
Mary O'Leary
Charles OByrne
Stephen Ochs
Nicholas C. Ognibene
Jennifer L. Olechowski
Elizabeth Evert & Andy Orr
Ellen Oshinsky
Michael Palagonia
Palm Beach Academy
Lisa Palmer
Stephen Pampush
Leslie Panella
Douglas Parizeau
Molly Parizeau
Kristin Paterakis
Jeffrey H. Patterson
Cassidy Paul
Lee Paynter
Susan W. Peck
Kathryn T. Peppers
Blair & Rachael Perkins
Alex Perkins
Therese Peters
The Pettengill Family
Samuel Pettengill
Sonja Pettingill

Gary & Mary Pforzheimer Family
The Phillip Family
Stacy & Mark Pibl
Christopher Pibl
Nicholas Pibl
Molly Pickall
Hannah Piersiak
The Pilgrim Family
The Pitarresi Family
Jackie Pitts
Carol & Charlie Poor
The Pope Family
George Post
Whitney Powel
Meeta Prakash
Chris Price
Hope Prockop
Procurement Partners
Alexandra Proelss
Maria Prorok
Yvonne Pucci
Peter Quayle
Kara Quirke
Martha & Greg Raber
Lawrence M. Raffone
Olivia Rask
Peter D. Rauch
Christopher J. Redecke & Maryam
Montague
Hannah Reed
Eleanor & Christopher Reich
Mattie M. Reid
Mark Reinhardt
Daniel B. Rew
Isaac Reyes
Lucy Reynolds
Jennifer Rhodes
Anthony J. Richmond
Davis C. Richmond
Reese K. Richmond
Alexandra Rippy
Timothy Robb
Emily H. Robinson
Sara Rodell
Elizabeth Rogers
Roland Foods
Kate Romanov
Stephen J. Rondestvedt
Madeleine Rondestvedt
Moriah Rosenblum
Jennifer Ross
Giovanna Rotellini
Mary Ruhl
Allegra Rumbough
Linda Rutherford
The Sadhwani Family
Helen Lee Sale
Luke Sasek
Kate & Paul Schaefer
Hallie Schaeffer
Johann Scheidt
Nancy Schimmel
Marc Schinderman
Cynthia Schneble
Peter Scholle

Nina Schuchman
Jake Schuster
Hilary Schuville
Steven Schwartz
Dorinda A. Seamans
David Seamans
Richard & Elyse Seeley
Bob & Lisa Semple
Peter Seterdahl
Rachel Shapiro
Christopher N. C. Shaw
Daniel Shea
Carly Shea
Karen L. Shepard
Evelyn Sherwin
Anne P. Sholley
Christian Siegl
Kate Hester
The Browning School
Charlotte & Seth Singleton
Hannah Sirois
Jody Collins Skinner
The Bolinger-Slate Family
John C. Smith
Patrick Smith
Julia E. Smith
Margaret M Smith
Ben & Sarah Snyder
Hannah Sokol
Stephanie Solomont
Margot Solvay
Winston Song
Rylan Soref
Linn T. Spalding
Robert Spalding
Amanda Spector
Chris B. Spencer
Thatcher Spring
Saint Julien Springs
Margaret Staller
Clayton Starr
Hayden Stebbins
Isabella Stelle
Linda & Bruce Stern
Katy Stetson
Bryn Sophie Stillwell
The Stillwell Family
Haley Stokas
The Storer Family
Matthew Storey
Taylor Strachan
Strand Capital Group
Will Strathmann
Courtenay Strausscampbell
Leo Strebel
Nicole Strebel
The Strom Family
Joseph Sukup
Dana Sulger
Tom Sulger
Kristen R. Sullivan
Christine Summers
Patrick Swearingen
Caroline Swiatocha
Switzer's Pharmacy

Kristen Taft
Morgan Tarrant
Robert L. Taylor
Eliza Temple
Maya Tepler
Joe Terrion
Ana Tessier
Michael S Tetreault
Frances Thomas
Susan P. Thompsom
Dorothy Joiner Thompson
Laurie & Peter Thomsen
Julie J. Thomsen
Elizabeth Thorson
Ann & John Tickle
George Tierney
The Titsworth Family
William H. Towbin
Elizabeth B. Twombly
Patricia P. Tyler
Devon Tyrie
Drew Tyska
Anonymous
Rick Van Ranken
Caroline Vanacore
Cole Vanacore
Jacob Varsano
Travis Verdier
Matt Vetter
Jodi Vinch
Elizabeth Votruba
Mina (Bartovics) Wade
Caleb Wagaman
Leslie Wagner
G. Corydon Wagner IV
Polly B. Wakeman
Hannah Wakeman
Beth A. Wald
Jann Walker
Corinne Wallner
Isabel Walton
James & Laura Ward
Allison Waters
John & Ann Watkins
Thomas C. Watson Jr
Watson Insurance
John & Bridget Weaver
Thomas Weaver
Joseph Weingart
Matthew T. Weismuller
Rom & Pamela Welborn
Peter Welch
Nathaniel Wellin
Andrew Westrich
Matthew Wetherell
The Wetsel Family
Suzy Wheeler
Ashton Whitcomb
Christiana Whitcomb
The Hensley Family
Sarah S. White
Priscilla Whittle
Olivia Wigon
Spencer Wild
Jeff & Lauren Williams

Lauren Willson
Ann B. Wilson
Kyle Wilson
Catherine Wilson
The Wilson Family
Laura Witherspoon
Evan B. Wood
Richard Woodhull
Rachel D. Wray
Rod & Natalie Wright
Sandra Wright
Emily Yeager
Benjamin Yeager
Nicolas Zbitnoff
Valerie Zhao
Lucy L. Zimmerman

PARENT SUPPORT

Fiscal Year 2019

FALL 1999

Toni Egger & Robert Taylor
Katherine Forrestal
Madie Ivy Head
Kyle H. Lubitz
Marie A Maloney
Carter McDowell
Grace G Miller

SPRING 2000

The Swett Family

FALL 2000

The Ambrecht Family
Mr. & Mrs. James C. Crosland

SPRING 2001

Clarke & Betsy Moody

FALL 2001

Madie Ivy Head
The Misoul Family

SPRING 2002

Barbara Alexander
Ted Griffith
Mr. & Mrs. S. Gunnar Klarr
The McDermott Family
Marion S. Searle

FALL 2002

David Hoffman

SPRING 2003

Clarke & Betsy Moody
Patricia P. Tyler
David & Beverly Verdier

FALL 2003

Mr. & Mrs. James C. Crosland
Jeff Hoisington
Kip & Sara Howard
Sue & Chris Klem
Ernie Parizeau

SPRING 2004

Ben Bailey III
Paul A. & Holly Burks Becker
The Engebretson Family
Mr. & Mrs. S. Gunnar Klarr
Cynthia Koury

The McDermott Family
Linda & Bruce Stern

FALL 2004

The Cerf Family
The Gildea Foundation
Alden & Laurey Mauck

SPRING 2005

Ed & Kathy Conroy
Kevin & Meg Cusack
The Engebretson Family
David & Beverly Verdier

FALL 2005

James & Kristen Atwood
Debbie & Bill Battjes
The Cerf Family
Jim & Cynthia Chaston
The Gildea Foundation
Whitney & Elizabeth Hatch
Steve Della Rocca & Courtenay Hardy
Dorinda A. Seamans
Marjorie King & Peter Wellin

SPRING 2006

Anonymous
Marie-Claire & James Brittain
Kevin & Meg Cusack
David Hoffman
The Misoul Family
Jackson Family Donor Advised Fund
Clarke & Betsy Moody
Ernie Parizeau
Ben & Sarah Snyder
Jerry & Marcia Tubergen

FALL 2006

Carmel Delaney
Daniel & Pamela DeVos
Lizanne Galbreath
Robert Levine
Christopher Lloyd
John Megrue
John & Bridget Weaver

SPRING 2007

Paul A. & Holly Burks Becker
Mary Jo Kaplan
Linda & Bruce Stern
Priscilla Whittle

FALL 2007

Anonymous
Nancie H. Cooper
Steven DePaul
Stan & Fiona Druckenmiller
Jennifer Lagor
Alden & Laurey Mauck
Linn T. Spalding
Laurie & Peter Thomsen

SPRING 2008

Molly Rogers Cramer
Kevin & Meg Cusack
Dick & Betsy DeVos
Judith & Kevin Donnelly
Douggy Douglass
The Engebretson Family
Philip & Kerry Haselton
John J. Prior

FALL 2008

Stephen Burnham
Jim & Cynthia Chaston
Carmel Delaney
Phil & Carolyn Francisco
Karen Kachadoorian
Mr. & Mrs. George Lesenskyj
Daniel B. Rew
Marjorie King & Peter Wellin

SPRING 2009

Mary Kate & David Barnes
Marie-Claire & James Brittain
The Frost Family
The Gamble Family
The HBE Foundation
William Ledingham
Dale R. Naylor
Blair & Rachael Perkins
William & Sandra Powel
Martha & Greg Raber
David & Beverly Verdier
The Vetter Family
Robert & Tona White

FALL 2009

Mimi Picotte

SPRING 2010

Elizabeth Baker
Paul A. & Holly Burks Becker
Tom & Tina Bourdeaux
Kevin & Meg Cusack
Gerald & Helen Halpin

Mary Jo Kaplan
Ernie Parizeau
The Phillip Family

SUMMER 2010

Steven DePaul
Sandra Wright

FALL 2010

Stephen Burnham
Laura C. Crume
The Easton Family
Mary Foss-Skiftesvik
Phil & Carolyn Francisco
Dennis & Marilyn Giannos
The Gildea Foundation
Martha & Marshall Huggins
Karen Kachadoorian
Stacy & Mark Pibl
Daniel B. Rew
Richard & Elyse Seeley
Chris B. Spencer
Priscilla Whittle

SPRING 2011

Ed Anderson & Linda Cabot
Beth E. Bernett
Diane & Ed Curland
The Gamble Family
James C. Kempner II
Mr. & Mrs. S. Gunnar Klarr
William Ledingham
Bronte McGarrah
Amy & Albert Springs
Elizabeth B. Twombly
Mark & Tricia Vanacore
The Vetter Family
Floyd & Kim Wilson

FALL 2011

Jill Eisenstadt & Michael Drinkard
Luke & Rhonda Fowler
Stephen & Sarah Murray
The Phillip Family
John & Marcia Zweig

SPRING 2012

Anonymous
Elizabeth Ambargis
Susan V. Balloch
Dale Dellacqua
Bob & Ross Henderson
David S. Lundeen
The Titsworth Family

SUMMER 2012

Mr. & Mrs. S. Gunnar Klarr
Eleanor & Christopher Reich

FALL 2012

James & Kristen Atwood
David & Lucy Ball
Lawrence & Deborah Catena
Patricia Gould
The Jones Family
Whitney W. & Clarke F.G. Jones
William B. Millard
Patrick Swearingen

SPRING 2013

Ed Anderson & Linda Cabot
Elizabeth Baker
Catherine Biddle
Kevin & Meg Cusack
Lauren Fasolo
The Frost Family
Jim & Gigi Goldman
Ted & Bonnie Henderson
Barbara E. Janulis
Richard Kite
Andrew Mauck
Mr. & Mrs. William A. Muggia
Gary & Mary Pforzheimer Family
Amy & Albert Springs
Mark & Tricia Vanacore
Bob VanderWeide & Shelby Norwich
Bruce R. Zetter

SUMMER 2013

The James & Amanda Kennedy Family

FALL 2013

Duane & Julie Harshorn
The Merison Family
Stephen Ochs
The Rohrer Family
The Titsworth Family
Rachel D. Wray

SPRING 2014

Christopher Argyrople
Kevin M. Barry, Jr.
The Easton Family
Rachel Hines & Michael Cembalest
Anne Newburg
Ernie Parizeau
Blair & Rachael Perkins
Dwight & Kirsten Poler
Mark & Tricia Vanacore
Beth A. Wald

SUMMER 2014

Anne S. Conder
Molly Rogers Cramer
Stephen E. Doten
Robert W Downes
The Hensler Family
Stacy & Mark Pibl
The Sulger Family
George Tierney

FALL 2014

Anonymous
Jeffrey & Abigail Diggins
Jeannette A. Furlong
Eric Hoffman
Mr. & Mrs. James F. Lavelle
Andrea Mueller & Ephi Eyal
Alexander Roepers
Peter Seterdahl
Siegert Family Fund of the
Minneapolis Foundation

SPRING 2015

Marie-Claire & James Brittain
David & Susan Cabot
Christine & Bob Crenshaw
Elizabeth Davenport
Dale Dellacqua
Bob & Ross Henderson
David Hoffman
Mary Jo Kaplan
Sarah Ketterer
Jay D. L'Archevesque
Jane C. MacElree Family Foundation
Andrew Mauck
Lara & Michael Meggitt
William C. Nystrom
Mr. & Mrs. Richard C. Patton
Jody Collins Skinner
Bob VanderWeide & Shelby Norwich
The Vetter Family

SUMMER 2015

Anonymous
Carrie & Kinsey Dyckman
The Easton Family
Scott, Stephanie & Drew Ginsberg
Michael Kochman & Mary Melton
Kyle Wilson

FALL 2015

Anonymous
David & Lucy Ball
Perry & Darby Buroker
Lizanne Galbreath
Beth Harrison
Duane & Julie Harshorn
Una C. Jackman
Northrup & Victoria Knox
Jay D. L'Archevesque
Jennifer macmillen
Nancy McCormick
John Megrue
William C. Nystrom
Hope Prockop
Steven Schwartz
The Vitaz Family
Polly B. Wakeman

SPRING 2016

Michael T. Alic
Greg & Elizabeth Allen
Hilary W. Allinson
Elizabeth Ambargis
James & Joyce Andersen
Audrey C. Brown
Stephen Burnham
Mark Connelly
Jon Cummings & Holly Hegener
JC Giordano & Errol Train
Jim & Gigi Goldman
The Hagerty Family
John & Laura Herrick
Patrick McCullough
Mr. & Mrs. William A. Muggia
Kathleen Nichols
Lawrence M Raffone
Amy & Albert Springs
Matthew Storey
The Titsworth Family
Leslie Wagner

SUMMER 2016

Anonymous
Alicia & Ken Duncan
The Friedland Family
Jennifer Hatfield
Jane & Bart Henderson & Family
The Marran Family
Susan W Peck
Mike & Susan Valaik
Peter Welch

SUMMER SAILING 2016

Tracy Hightower
James Iferenta

FALL 2016

Nancy Braun
Lynne Byrne
Jennifer L. Cook
Dale Dellacqua
The deTuro Family
The Engebretson Family
The Gamble Family
Eric Hoffman
John & Janice Jester
Whitney W. & Clarke F.G. Jones
Karen Kachadoorian
Andrew & Melissa Lawson
Debra Lipsett
David McCormick
Patrick McCullough
Yolanda Wu & Neil Platt
The Richmond Family
Stephen J. Rondestvedt

SPRING 2017

Mary Kate & David Barnes
Maya Colantuono
Kathleen Connorton
Christine & Bob Crenshaw
Anne Davis
Anna & Michael de Cordova
Pamela Dickinson
Christine Dillon
Samy Elkaslasy
Jane G. Enterline
James Felderman
Guy Forman
Deanna Green
Kenyon B. Grogan
John & Arlene Howard
Emmett de Kanter
Denise Klein
Larry & Vicky Lunt
Lisa G. McGill
Rod & Natalie Wright

SUMMER 2017

Anonymous
The Cooper Family
Leslie B. Cutler
Suzanne & Konrad Gesner
The Hardy Family
Ted & Bonnie Henderson
Jennifer Kennedy
Marcela Maldonado
David Singer & Diana Kapp

SUMMER SAILING 2017

Anonymous
Alison D. Neumann

FALL 2017

The Bankowski Family
The Carroll Family
Jon Cummings & Holly Hegener
Robin D'Alessandro & Noel Philp
Carol Dewing
Stephen & Dana DiPrima
Victoria A. Hackett
Quinn Keefe
Lori Keefe
Mr. & Mrs. James F. Lavelle
David S. Lundeen
Eric S. Moore
The Neuman Family
The Nonnenmacher Family
The Pilgrim Family

SPRING 2018

Greg & Elizabeth Allen
The Arigo Family
The Balderson Family
Bill & Kara Bohnsack

Bill & Catherine Bradford
Steven & Julia Braithwaite
David & Susan Cabot
Mark & Lisa Cirilli
Jared & Laura Collins
The Reilly-Dickey Family
Carrie & Kinsey Dyckman
The Easton Family
Alison & David Graham
The Healy Family
Mark & Lara Heimann
Ted & Bonnie Henderson
The Highman Family
Leith Barry
Andrew Kimball & Sarah Williams
Dr. Adam Koppel & Dr. Brenda Haynes
Jane C. MacElree Family Foundation
Mr. & Mrs. William A. Muggia
Andrew Nipon & Nancy Easton
Weisel Family
Michael Pausic & Kelley MacDougall
The Pope Family
Michael Sim
Amy & Albert Springs
Edward Stern & Stephanie Rein
The Stillwell Family
The Storer Family
Davison R. & Frances D. Thompson
David & Beverly Verdier
The Wetsel Family

SUMMER 2018

John Fisher & Jennifer Caldwell
The Dayton Family
The Di Egidio family
Alexander & Emily Friend
Graham Goldsmith & Barbara Straut
Scott Gorsline
Kevin Cotter & Susan Hanifin
Tammy Harris
The Hoyt Family
Seth & Cynthia Lawry
Ann Lenane
The Lior Family
Linda D. McGivern
Laura A. Meyerson
Ereca Miller
Maria Prorok
Jennifer Rhodes
John Shrewsbury & Ereca Miller
The Shum Family
The Bolinger-Slate Family
Nicole Strebel
The Strom Family
The Sulger Family
The Thayer-McGivern Family

FALL 2018

Anonymous
The Bebergal Family
Christopher & Theresa Cook
Brenda Cudney
Grace Curley

Helen Blair Day
Jill Eisenstadt & Michael Drinkard
The Forman Family Foundation
Patricia Gould
Eric Hoffman
Andrew & Cheryl Huffman
Martha & Marshall Huggins
The Ingrassia Family
John & Hilary Keene
Mr. & Mrs. Scott Kirkpatrick
The Lyons Family
David McCormick
Andrea Mueller & Ephi Eyal
Janesta Noland
Yolanda Wu & Neil Platt
Bijan & Lauren Sabet
The Sadhwani Family
Michael & Denise Sharp
Christopher & Laura Towle
Drew Tyska
Mark & Tricia Vanacore
The Hensley Family
Sarah S. White

SPRING 2019

James & Joyce Andersen
Dawn Averitt
David & Joanna Beitel
Jill Boudreau & Howard Present
Ronald Cappello
Tracy Clement
Elizabeth Davenport
Sara C. DeBoer & Karl Swedberg
Samy Elkaslasy
Patrik Engstrom
Guy Forman
Varick & Alane Foster
Tad W. Guleserian

Beth Harrison
Nanette Hayre
The Holland Family
Henry M. Ingram Jr
Tatiana Kamarskaya
Kennet & Alice Kendall
Robert E. Kenney
John Kevin & Mary Jane Namian
Thomas Kuck
The Martens Family
Patrick McCullough
Sarah McGinley-Smith
The Peterson Family Fund
The Pitarresi Family
Jennifer Eplett Reilly & Sean E. Reilly
The Rohrer Family
Karen L. Shepard
Rod & Natalie Wright
Juan Zhao

SUMMER 2019

The Bitzer Family
The Borghese Family
Perry & Darby Buroker
Juliana & Douglas Carlucci
Kelli A. Collins
The Dretler Family
Suzanne & Konrad Gesner
Scott, Stephanie & Drew Ginsberg
Mark & Anne Hatch
The Hoyt Family
Andrew & Cheryl Huffman
Maureen & Ronald Kane
Bassem Mansour
Robin & Cyrus Noble
Stephen Pampush
The Pettengill Family

Christopher J. Redecke &
Maryam Montague
Daniel Rosenbaum
Jessica & Powell Spears
Dana Sulger
The Thorson Family
Tom & Mila Tuttle
Aaron & Sherry Wangenheim
James & Laura Ward
Mark & Jill Wehrly

FALL 2019

Courtney S. Hollander
Debra Lipsett
Sean G McGould
Meghan McGowan
Marjorie T. Nachman
Lisa Palmer
The Reynertson Family
Brice Russian
Cari Switzer
Corinne Wallner
James & Laura Ward

SPRING 2020

Jeffrey Atwood
Jill Averitt
Anna & Michael de Cordova
Ben Freeman
Deanna Green
Jason Mraz
Jennifer Nelson
William C. Nystrom
Jeffrey H. Patterson
Lee Paynter
Sonja Pettingill
The Scott Family

ALUMNI SUPPORT

Fiscal Year 2019

SPRING 1999

Harriet Durkes
Joshua Lichtman
Robert C. Neely
Moriah Rosenblum

FALL 1999

Sheena Cline
Francesca Forrestal
Elizabeth B Novak
Molly Pickall
Thatcher Spring
Robert L. Taylor
G. Corydon Wagner IV

SPRING 2000

Mary Assini
Chloe Farrell
Monique Johnson
Susan Lintern
Glendaly Munoz Chukwuma
James Neely

FALL 2000

Andrew Thaler
Gretchen Goodrich Curtis
Caitlin Townsend Lamb
Molly Lawson Barrett
Kristen R. Sullivan
Richard Woodhull

SPRING 2001

Jennifer (Martin) Allan
Brett Moody Bodnar
Peter M. Igoe III
Nina Kumar
Helen Lee Sale
Mina (Bartovics) Wade

FALL 2001

Meg Bunn
Chuck Head
Llewellyn Lane Mckee
Alexandra Proelss

SPRING 2002

Anonymous
Charles Alexander
Julia Bakutis
Mary Clare Bohnett
Bob & Krissy Clutterbuck
Caroline Currie
AnnaRose King
Cristin McDermott
Lilly McKenna
Victoria Morrow
Johann Scheidt
Jake Searle
Amanda Spector
Saint Julien Springs
Christine Summers
Laura Witherspoon

FALL 2002

Jessica Baylor
James Byun
Mike Cortina
Alex DeBlois
Nick Del Vecchio
Alessandra Echeverria
Alison A. Ercole
Lindsey Gael
Skyler Hopkins
Kathryn Hoyt
Taylor Lalemand
Zindzi McCormick
Jackie Pitts
Sara Rodell
Lucy L. Zimmerman

SPRING 2003

Molly L. Carter
Keenan Harn
Brookes Moody
Alexandra Penny

FALL 2003

Margaret S Crosland
Amanda Frew
Anne Gibbons
Lindsay M. Melzig
Katherine Nix
Kate & Paul Schaefer

SPRING 2004

Sarah Bailey
Hilary Becker
Anna P. Britain
Hillary Bunn
Chris Carson
Kaila Demaria
Hayley Frank
Charles Friedman
Kathleen Hudson Giese
Andrew Gough
Candice & Will Hipp

Kimberly Hokin
Benjamin Hone
Elizabeth Horvitz
Courtney & Charlie Knights
Jensen Lowe
Kelsey Mahony
Trip McDermott
Maria McKelvey
Rebkah Klarr Nevins
Timothy Robb
Hilary Schuville
Julia E. Smith
Margaret M Smith

FALL 2004

Kathryn Arffa
Emily Henkes Callahan
Kate Gibson Carey
Annalisa Carson
Warren B. Cerf
Noelle Cooper
Chandler Couch
Kirsten Dargis
Patrick DiLoreto
Nicholas Emmons
Katherine Garratt
Julia Harwood
Austin Hill-Kleespie
Dustin Kloempken
Matthew E. Long
Mr. & Mrs. Christopher Mahaney
Laura McLaughlin
Stuart Naeny
Laura Nelson
Mary O'Leary
Jennifer L. Olechowski
Kristin Paterakis
Hannah Sokol
Taylor Strachan
Frances Thomas
Allison Waters

SPRING 2005

Scott Aland
Megan Browning
Jeremy Church
Rachael Clement
Miles Douglass
Nicholas Engebretson
Anna S. Engst
Joan Erickson
Alec E. Faggen
Caroline Giguere
Monique Guimond
Brittany Keefe
Nicholas Keeney
Jane Kinney
Kendra Margulies
Alice McCurdy
Peter J. Meijer
Ellen Oshinsky
Isaac Reyes
Nina Schuchman

Travis Verdier
Lauren Willson
Ann B. Wilson

FALL 2005

Jaclyn Battjes
David Blake
Jonathan Cerf
Stephanie J. Chaston
Lucas Cherrington
Jacqueline Codair
Colton Coughlin
Katherine B. Dembergh
Leah Downey
Mr. & Mrs. Justin Drazin
Drew Fink & Daniela Uribe
Henry Gerrity
Henry Hatch
Olivia & Jack Downing
Maggie R. Jensen
Chris Keally
Michael Kratz
Hanna Kruckman
Antonia Pryor Leavitt
Patrick Long
Andrew Melby
David Miller
Kara Quirke
Kate Romanov
David Seamans
Daniel Shea
Anne P. Sholley
Eliza Templet
Elizabeth Votruba
Nathaniel Wellin
Benjamin Yeager
Nicolas Zbitnoff

SPRING 2006

Greta Bossenbroek
Stephen Cargill
Margaret Cissel
Flora Drury
Taylor Hoffman
Jonathan Komisar
Gerald Leverich
William C. McCalpin
Wes Mize
Kelsey Moody
Wesley Norton
Douglas Parizeau
Alexandra Rippy
Cassandra Siegel Neubauer
Hayden Stebbins
Maya Tepler
Luke & Diandra Tubergen

FALL 2006

Matthew Ale
Charles Carey
Abram Dawson
Katie Delaney

Bridget Ercole
Hanna Koch
William Levine
Molly G. Lloyd
Christopher Megrue
Nicholas C. Ognibene
Katy Stetson
Mackey Violich
Thomas Weaver

SPRING 2007

Philip Carson
Dominique Keefe
Sarah Kollar
Julianna Lord
Zoe Norcross
George Post
Peter Scholle
Stephanie Solomont
Morgan Tarrant
Susan P. Thompsom
Matthew Wetherell
Ashton Whitcomb

FALL 2007

John Azubuike
Liza Calkins
Hannah Druckenmiller
Nina Fisher
Mary George
Samuel Lagor
Lilly R. Miller
Catharyn Morris
Meeta Prakash
Robert Spalding
Will Strathmann
Julie J. Thomsen
William H. Towbin

SPRING 2008

Ned Adriance
Oliver Engebretson
Catherine G. Lucas
Matthew W. McCalpin
Thomas M. McDonough
Christopher Norris
Jennifer Ross
Spencer Wild

FALL 2008

Scott Chaston
John DiLoreto
Christopher Kachadoorian
Alexander Keefe
Brian Kiley
Brian S. Lee
Simon Mann-Gow
Leslie Panella
Valerie Zhao

SPRING 2009

Hayley Brown
Heather B. Hoffman
Sarah Kistner
Alex Perkins
Whitney Powel
Mattie M. Reid
Isabella Stelle
Joseph Sukup
Kristen Taft
Matt Vetter
Christiana Whitcomb

FALL 2009

Will Kister
Cole Meyerhoff
Molly Nash
Maggie Nichols
Lucy Scott
Catherine Wilson

SPRING 2010

Erin Baker
Elizabeth Becker
Helen Bourdeaux
Molly Parizeau
Peter Quayle
Luke Sasek
Hallie Schaeffer

SUMMER 2010

Grace Dennis
Rosamond DePaul

FALL 2010

Thomas Bales
Alysia Boyce
George Giannos
Christopher Pibl
Allegra Rumbough

SPRING 2011

Gigi Andersen
Emma Beecher
James Curland
JP Ferro
Eliza Hazen
Brett McQuaide
Caroline Vanacore
Evan B. Wood

FALL 2011

M. Tundi Agardy
Griffin Hunt
Kate Maroni
Brendan McDonnell

SPRING 2012

Kira Akka-Seidel
Natalie Grune
Greg Ledingham
Annie Obrecht
Hannah Piersiak
Linda Rutherford

SUMMER 2012

Nicolas Benitz
Aiko Chamby

FALL 2012

Kaitlin Ball
Maggie Brand
Hadley Edie
Catherine Ellison
Remington Gerst
Caroline Jones
Emily H. Robinson
Jacob Varsano

SPRING 2013

Julia Baker
Dana Biddle
Bradford Driscoll
Caroline Muggia
John Norfleet
Cole Vanacore
Ben VanderWeide

SUMMER 2013

Tim Gronet
Sophie E. Kennedy
Juliette Lee
Julie Lord
Haley Stokas

FALL 2013

Carly Shea
Evelyn Sherwin

SPRING 2014

Colin Horgan
Isabel Walton
Olivia Wlgon

SUMMER 2014

Madeline E. Doten
Nicholas Pibl
Clayton Starr

FALL 2014

Brian Baker
Courtney Close
Melinda Edie
Thomas Nugent
Margaret Rogers

SPRING 2015

Hadley Gouldman
Madeleine Nystrom
Olivia Rask

SUMMER 2015

Isabella Horstmann
Jessica Kaul
Graham C. Manning
Kyle Wilson
Emily Yeager

FALL 2015

Hannah Wakeman

SPRING 2016

Josephine Cummings
Elizabeth DeMello
Taylor Herrick
Azam Janmohamed

SUMMER 2016

Elodie Rose Marran
Tom Sulger
Andrew Westrich

FALL 2016

Soren Barclay
Sam Cowles
Kyra Hall
Abigail Frances Mottur
Davis C. Richmond
Madeleine Rondestvedt
Christopher N. C. Shaw
Margaret Staller
Ana Tessier

SPRING 2017

Anonymous
Meg Barnes
Martina Cappellano
Elizabeth Felderman
Patrick Howard
Katherine Kosoff
Laela Lunt
Annie McGill
Keenan McMorrow
Margot Solvay

SUMMER 2017

Alafair F. Cutler
Madison Gesner
Ryan C. Hardy

FALL 2017

Hailey Bernstein
Liam Carroll
Nicholas Bower
Martine Lavelle

Oliver Moss
Tyler Murphy
Max Nonnenmacher
Michael S. Tetreault

SPRING 2018

Matthew Arigo
William G. Dyckman
Bella Garfield
Lani Koppel
Bryn Sophie Stillwell
Dorothy Joiner Thompson

SUMMER 2018

Sean Dunbar
Leo Strebel

SPRING 2019

Ava Guleserian
Oliver Kendall
Devon Tyrie

SUMMER 2019

Benjamin P. Buroker
Claire Mansour
Samuel Pettengill
Elizabeth Thorson



